

TORQ™

Sternal closure, with a twist™



Improves sternal stability

Ensures consistent closures

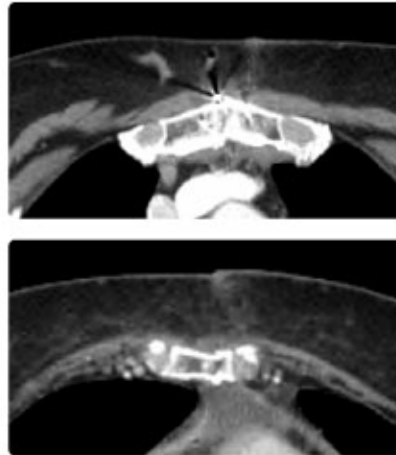
Prevents wire breakages

The **TORQ™** sternal closure device improves sternal closure when using standard steel wires

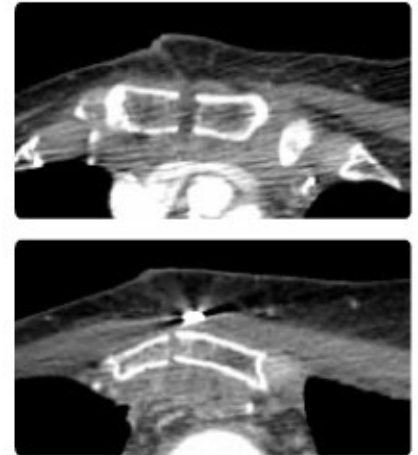


By tensioning and then twisting the wire, the TORQ produces a well approximated and stable sternum.

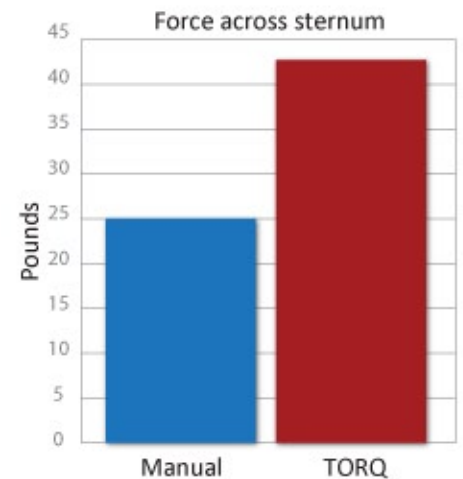
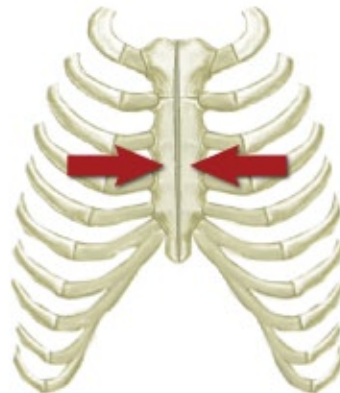
Sternum closed with the TORQ



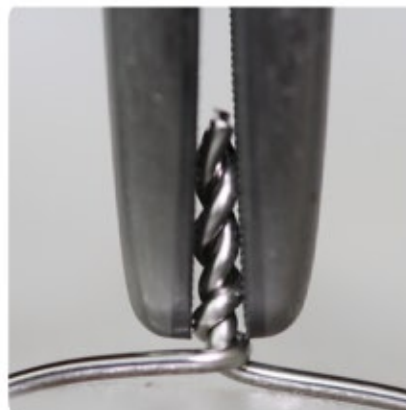
Sternum closed manually



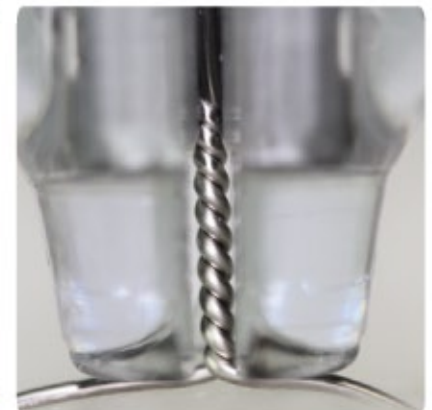
The TORQ increases the force used to approximate the sternum, making it easier to close the sternum, especially on large patients.



The TORQ twists the wire tightly and evenly, preventing wire damage at the bottom of the twist.



Manual twisting weakens the wire at the base of the twist, where it is most likely to break



The TORQ evenly twists the wire from the top of the twist, without weakening the wire at the base